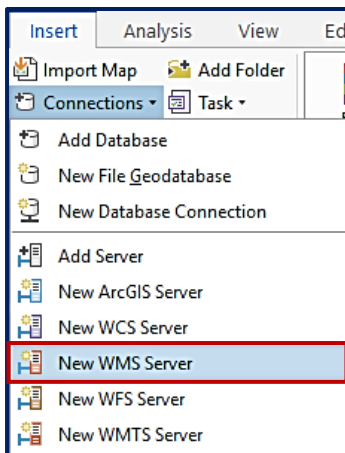


## Adding WMS OGC Services ArcGIS Pro

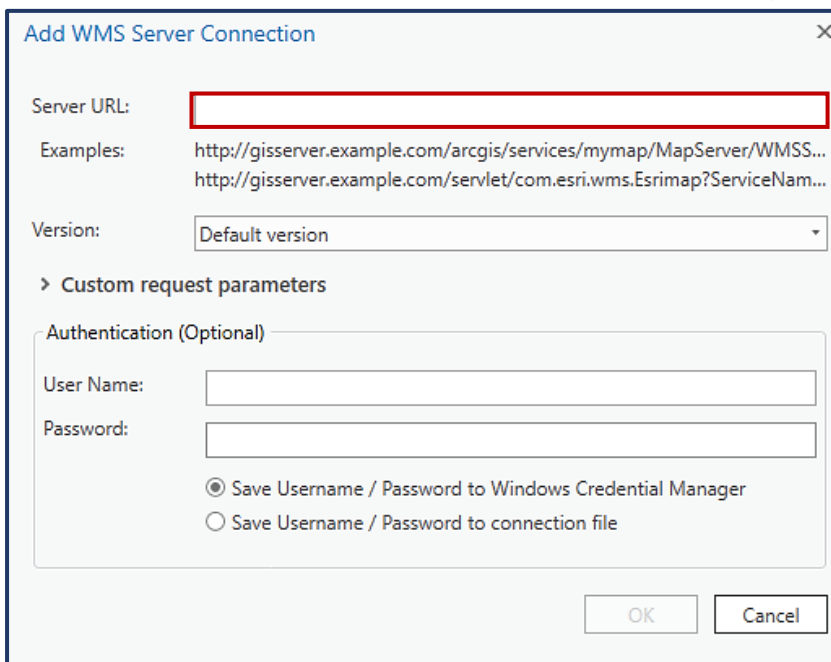
1. On the **Insert tab**, in the **Project group**, click on the **Connections** drop-down and select **New WMS Server**.



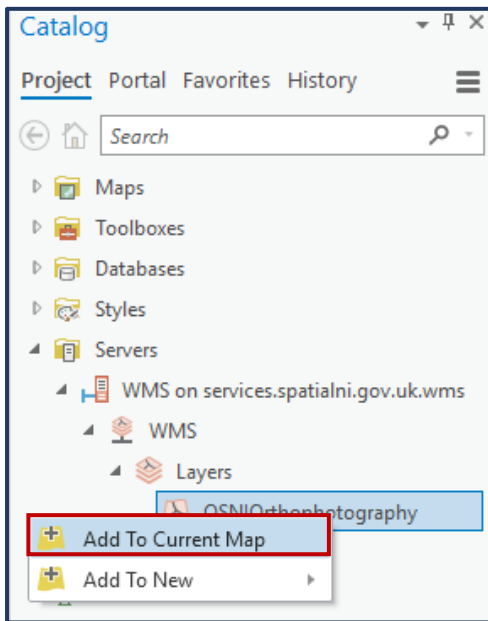
The Add WMS Server Connection dialog box will now appear.

2. Type in the **URL** of the OGC WMS Service in the Server URL text box. Then click **OK**.

A new WMS connection will now appear in the Catalog pane and the Catalog view.



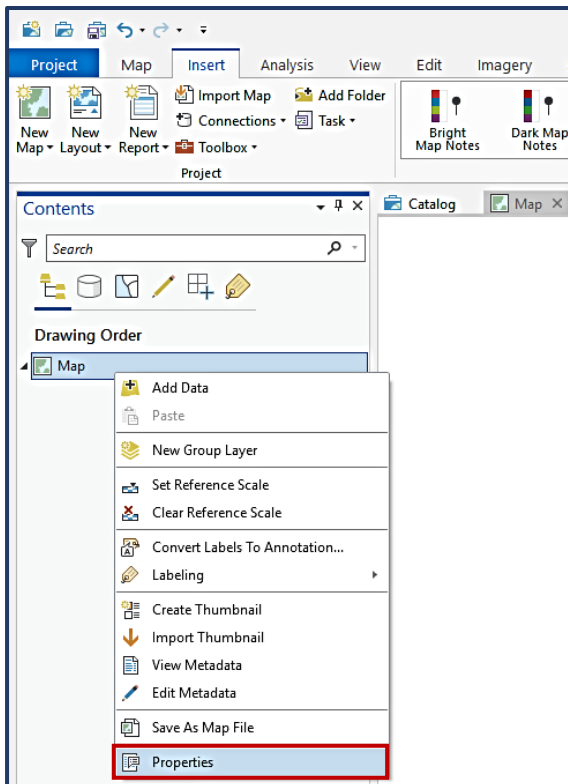
3. **Right-click** on the WMS service and select **Add To Current Map** or you can also drag and drop the WMS service on to the map or contents pane.



### Changing Coordinate System to Irish Grid TM 65

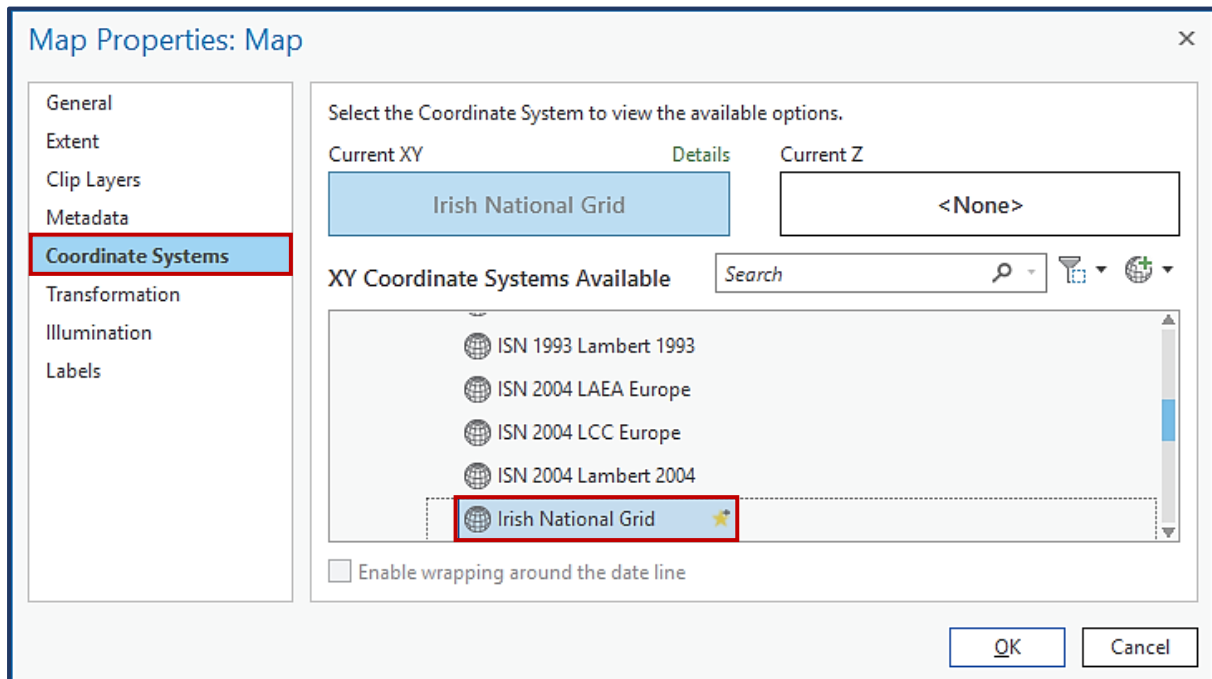
In ArcGIS Pro it is important that before you add content to your map that you set the maps coordinate System.

1. To do this **right-click** on map in the **Contents** pane and select **Properties**.



This will open the Map Properties: Map dialog box.

2. Select **Coordinate Systems** from the list of option on the left. Now use the search function available to find and select **Irish National Grid**.



**\*NOTE:** A WGS Server supports the use of Irish National Grid. Therefore any data you now add to your map will be displayed in Irish National Grid as you have preselected this coordinate system.