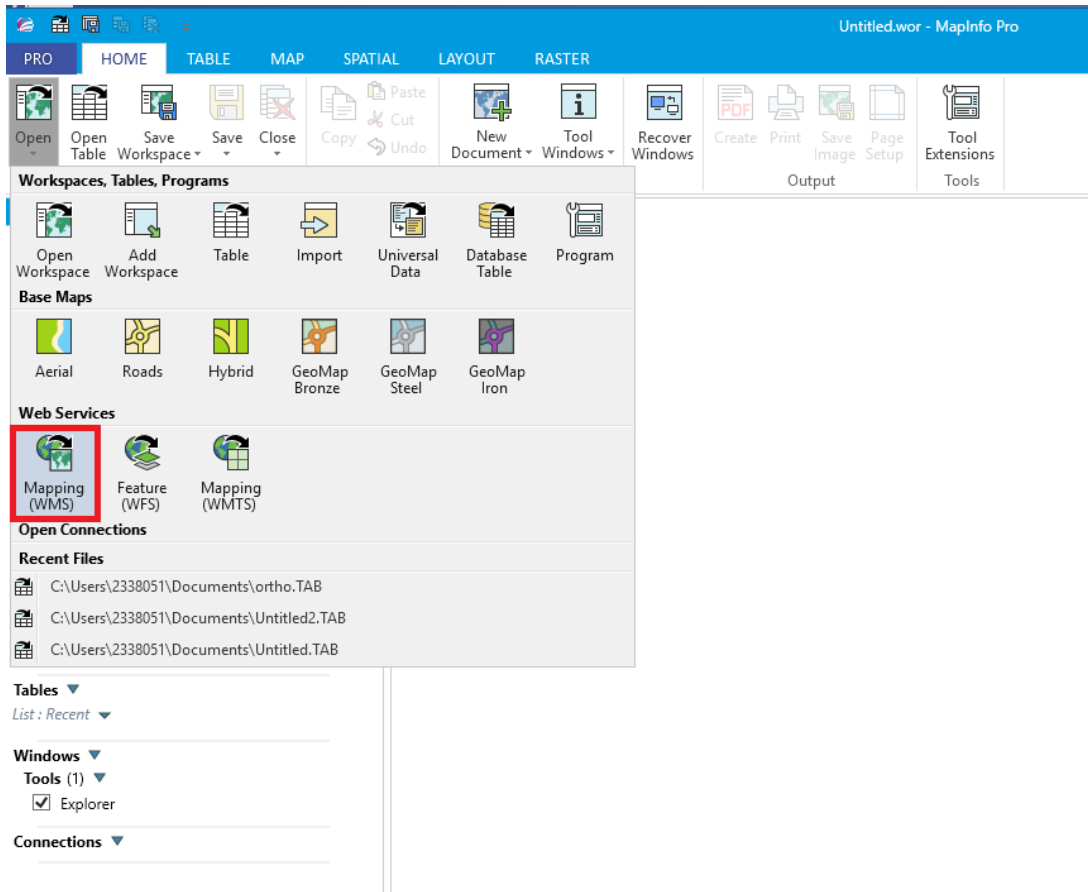
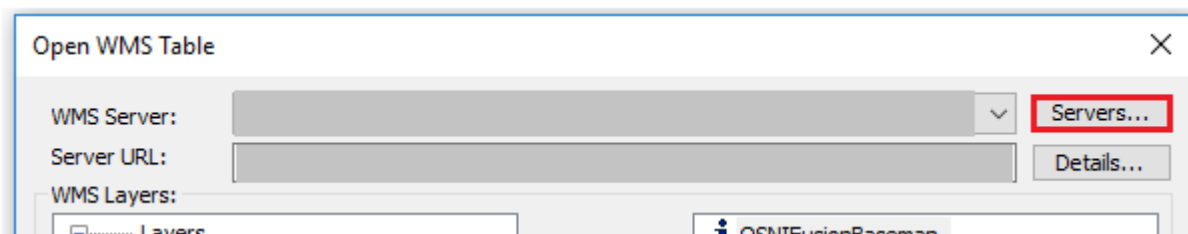


Adding WMS OGC Services MapInfo Pro

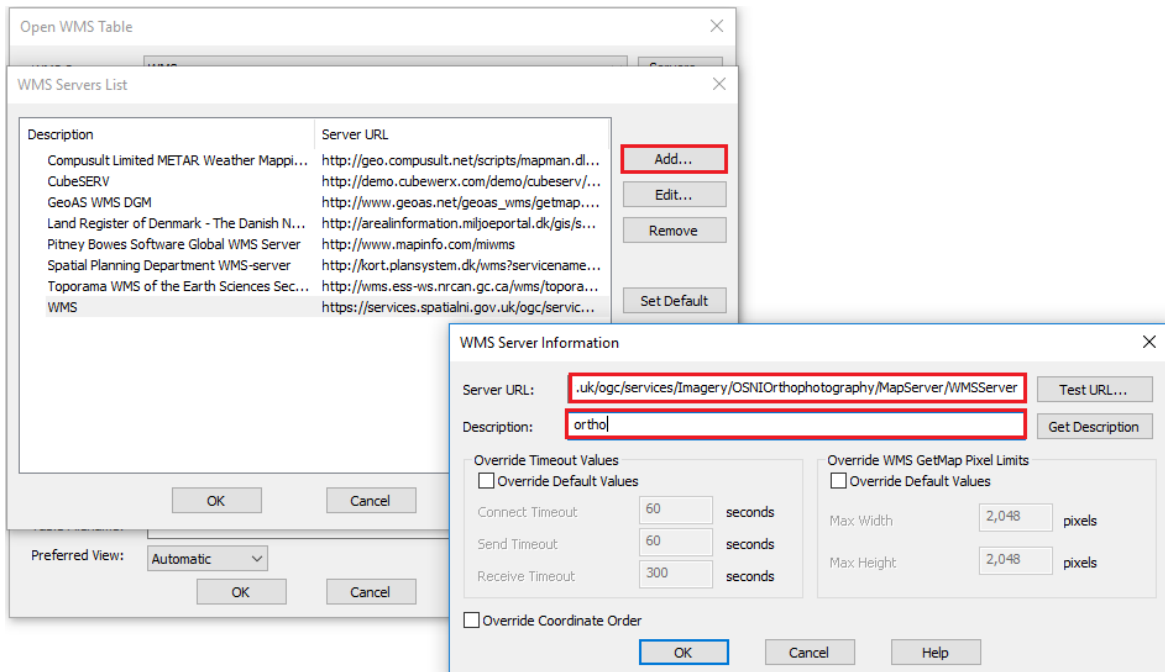
1. Click **Open** then navigate to **Mapping (WMS)** under Web Services



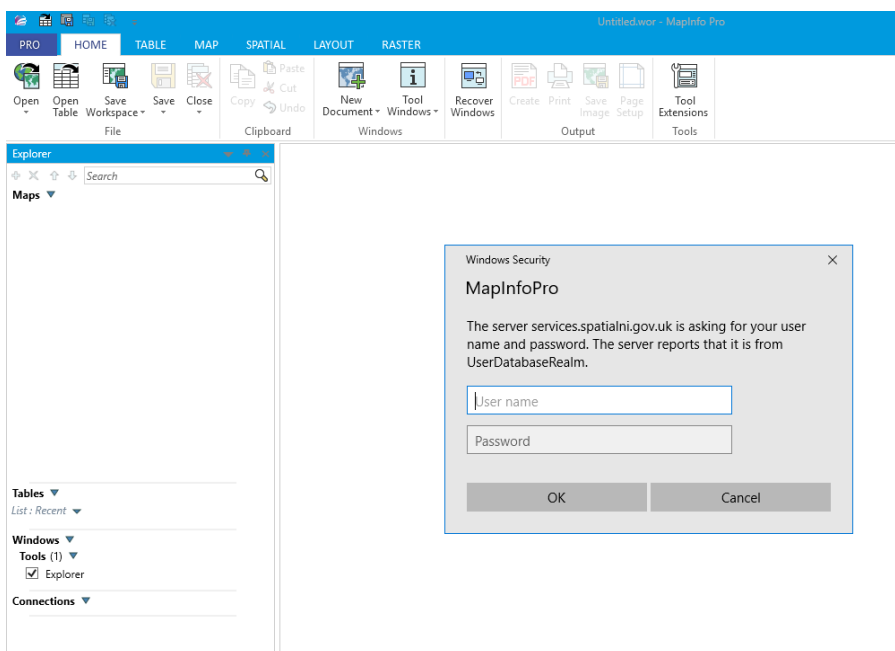
2. Select **servers** in the Open WMS Table Dialogue box



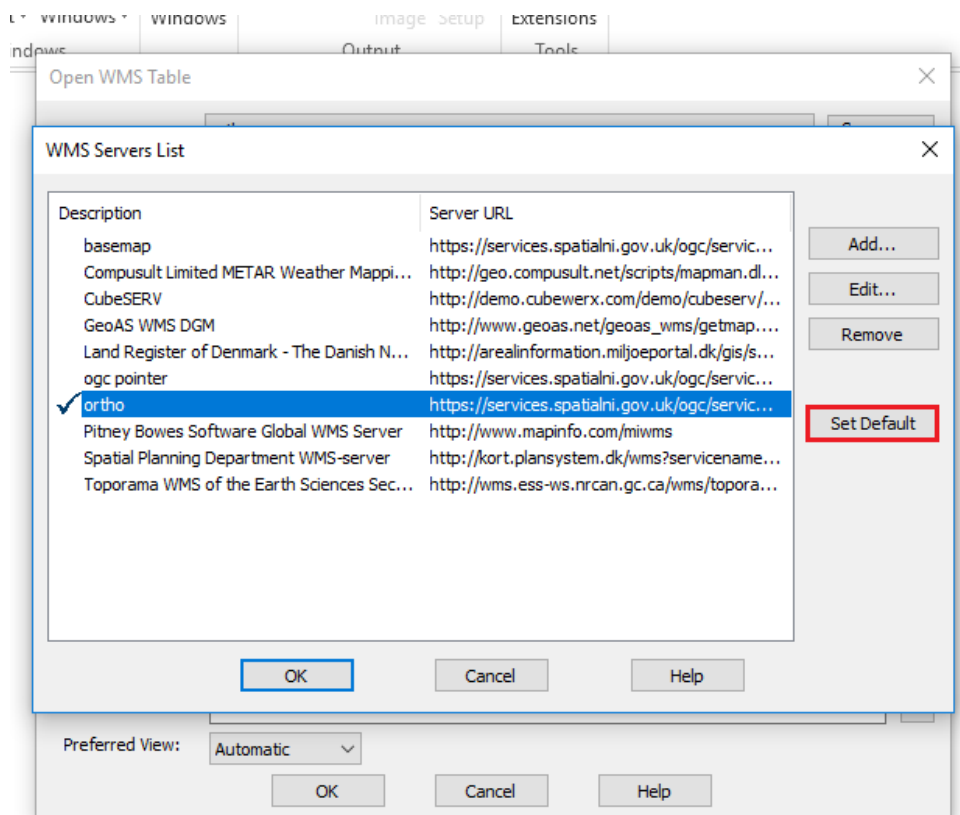
3. Select **Add** and paste the URL for your required service into the Server URL box, adding a description. Click **OK**.



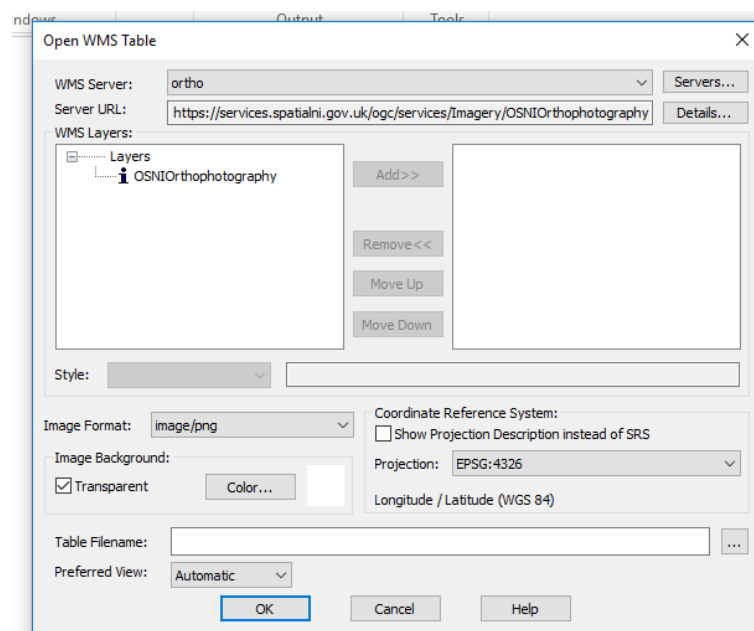
4. You will be asked to input your credentials (provided by Spatial NI on request)



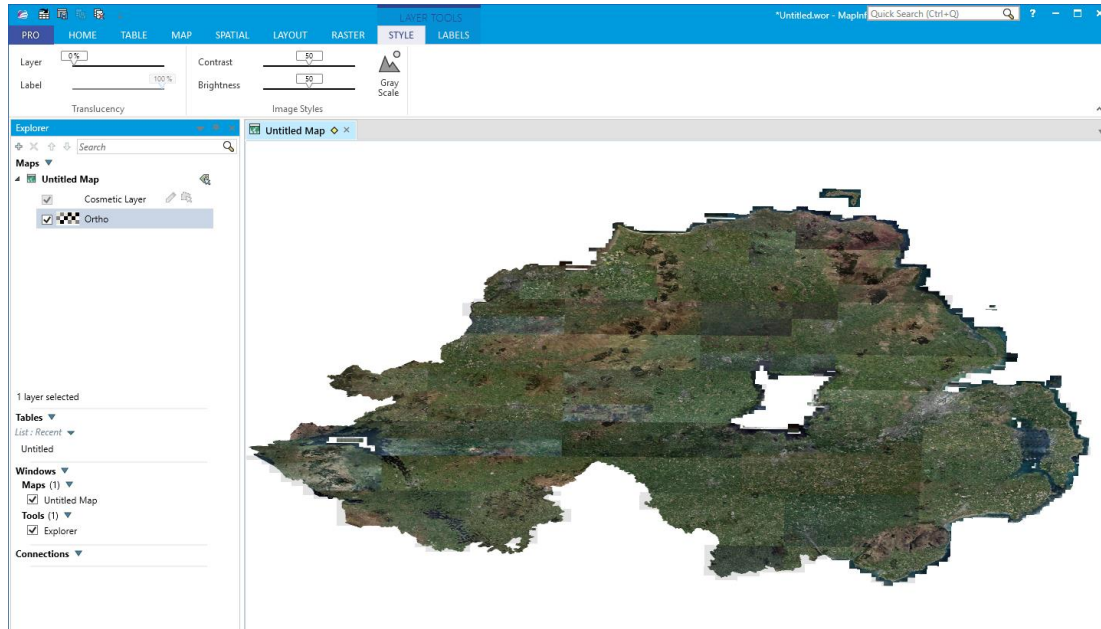
5. Set your service as **default**



6. The service you have added will appear under 'WMS layers'. **Select it on the left and click add, then ok.**



7. The service will appear in the map window.



8. Services can be layered on top of each other when saved as separate files (in Table Filename, see point 6).

